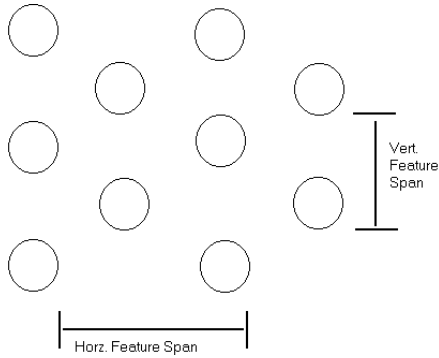


# Feature Span

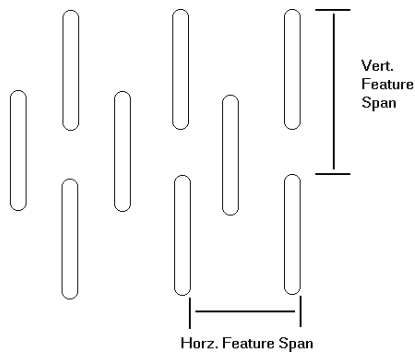
The feature span measurements are used for various calculations through out the SS200 system. They effect surface fits in Line width, Beamview, etc. Below are the various types of shadow masks used and how the feature spans are measured. Although feature spans and mask type are determined automatically, the values can be overridden if there is doubt in the measurement.

## Dot Matrix Mask



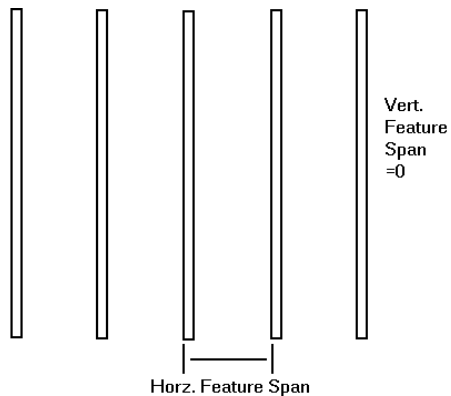
On a dot matrix display, the horizontal and vertical feature spans are measured as shown. Note that the vertical feature span will yield the same value as the advertised 'dot pitch' of the display.

## Slot Mask



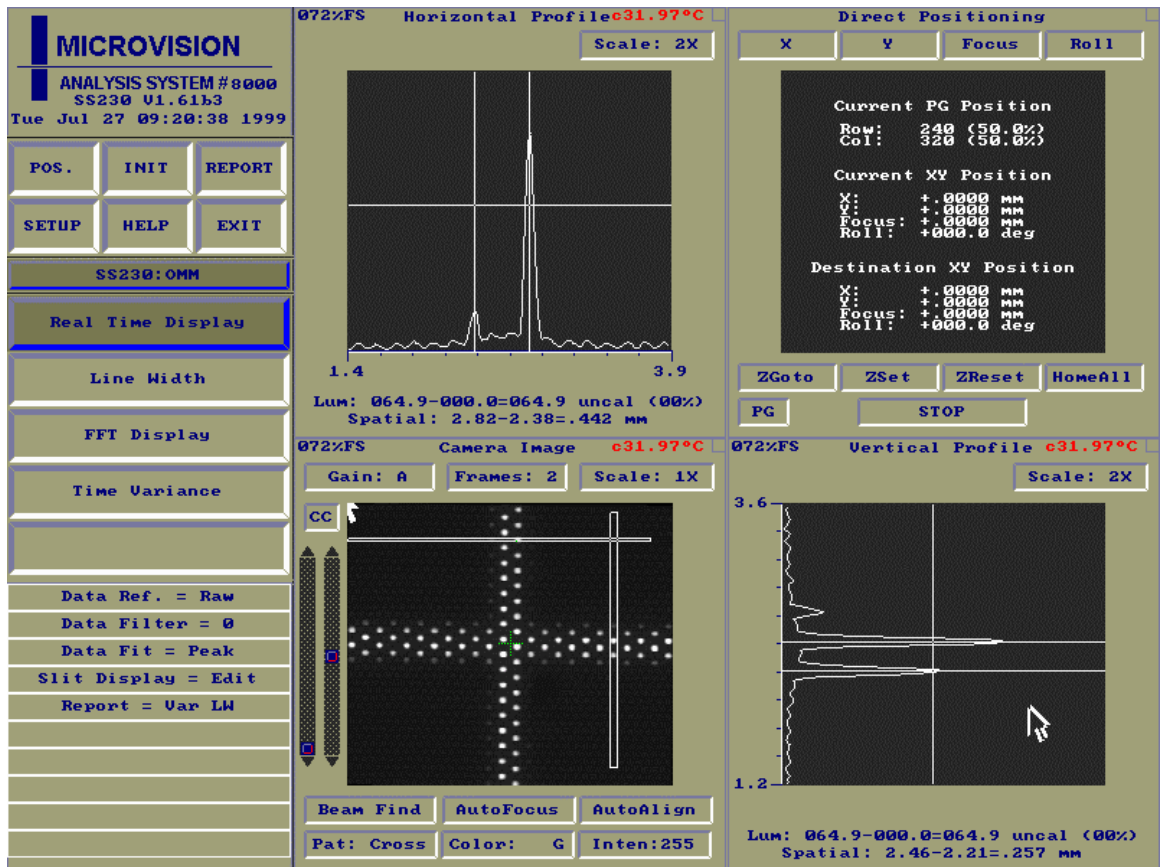
On slot type displays, the horizontal and vertical feature spans are measured as shown.

## Stripe Mask



On stripe displays, the horizontal and vertical feature spans are measured as shown. Note that the vertical feature span is zero.

## Manually Measuring Feature Span



The screen dump above shows how to measure the feature span on a dot matrix shadow mask. Note that the slits have been sized as to only 'cut through' the vertical and horizontal features. The option 'Slit Display' has been set to Edit to allow for slit size adjustment.